

natural<sup>led</sup><sup>®</sup>  
Parking/Outdoor Lighting



# AREA LIGHTS

Outdoor areas like parking garages, roadways, and pathways need bright, durable lighting. NaturaLED designs and engineers lighting solutions with features that are energy efficient, and easy to install.



10 year warranty available  
(registration required)

## SAL SLIM AREA LIGHT



\* 75W comes with CCT3 and selectable wattage

The new Slim Area Light is 50% lighter than the previous generation, yet still very durable with an improved heatsink. Available with a 10 year warranty in bronze or white, the DLC Premium 75W SAL is both color and wattage adjustable. Special optics of 400W are available for tennis/pickleball courts. 25-400W can produce up to 60,000 lumens. Accessories include: Slip Fitter, Yoke, Extruded Arm, Wall Mount or Tennis Court Arm.

Available in Type 3, Type 4, Type 5, Tennis 3, or Tennis 4 light distribution.

- 3000K, 4000K, 5000K
- 25 – 400 watts
- 3,500 - 6,0000 lumens
- Input line voltage:  
120-277V / 277-480V
- Accessories: Photocell, Motion Sensor, Surge Protector, Glare Shield, Back Light Cover

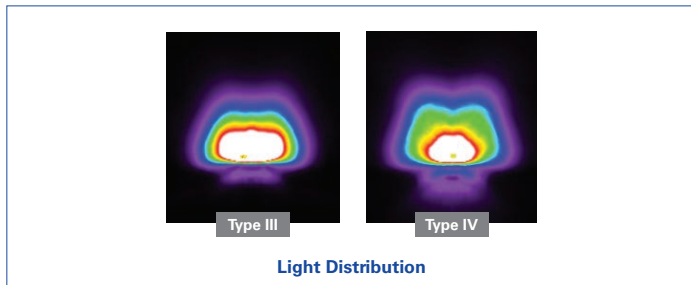
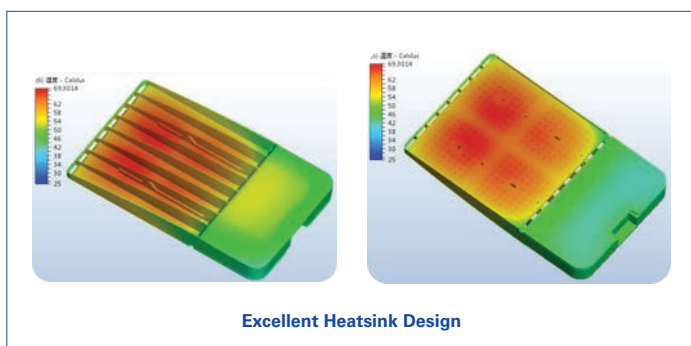
Available color



Bronze



White



## CAL - COMPACT AREA LIGHT

The NaturaLED Compact Area Light is an excellent option for generating bright, even illumination with up to 42,823 lumens. Constructed with a durable, die-cast aluminum housing and excellent thermal design, this area light also offers multiple mounting options and long cables for easy wiring.



- 4000K, 5000K
- 100, 150, 240, and 300 watts
- Up to 42,823 lumens
- Input line voltage:  
120-277V / 120-347V / 277-480V
- Accessories: Photocell, Motion Sensor, Surge Protector, Glare Shield







Available in 2 sizes



## TRADITIONAL WALL PACK

The 3CCT Traditional Wall Pack is a versatile fixture that offers both color and wattage selectable options. Designed with a built-in photocell and longer wiring cables, this fixture is easy and quick to install.

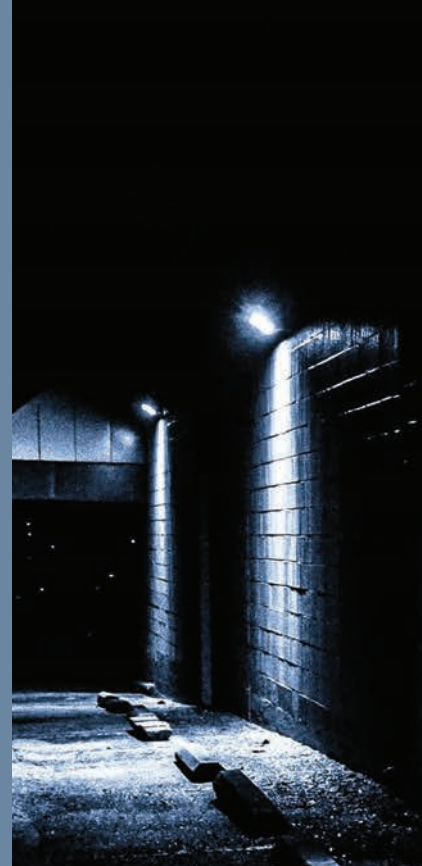
- 3CCT - 3000K, 4000K, 5000K
- 28/38/60W or 60/80/100W
- Up to 14,500 lumens
- Accessories: Motion Sensor, Emergency Driver, Wireguard, Replacement Lens, Additional Surge Protector



Build-in photocell



CCT and SW Switch



# WALL PACKS



## CUTOFF WALL PACK

- 4000K, 5000K
- 40, 60, 80, and 120W
- Up to 14,667 lumens
- Accessories: Emergency Driver, Photocell

Available in 2 sizes



## SLIM WALL PACK

- 4000K, 5000K
- 15, 28, and 45W
- Up to 5,680 lumens
- Accessories: Photocell, Slip Fitter, Swivel Bracket, 3/4" NPT Knuckle Mount

Available options:



Color -  Black  Bronze

Adjustable Angle



**ADA**  
Americans with Disabilities Act





# CANOPY LIGHTS

## SLIM CANOPY (10" X 10")

The smaller Slim Canopy features a low-profile design with a die-cast aluminum housing and shatter-resistant polycarbonate prismatic lens. In addition, it is dust-proof and includes a 1/2" threaded conduit entrance on each side. It comes either with or without a microwave sensor behind the lens.

This DLC Premium fixture supports both pendant and direct surface mounting, is IP65 rated and available in black or white.

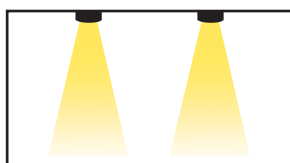
- 4000K, 5000K
- 28, 42, or 59 watts
- Up to 7,845 lumens
- Accessories: Microwave Sensor, Photocell, Emergency Driver, Beauty Plate, Drop or Frosted Lens, Surge Protector



## SLIM CANOPY (13" X 13")

The larger Slim Canopy is DLC Premium, IP65 rated and ETL listed. A dust-proof, sealed structure, with 1/2" NPT threaded conduit entrances on each side. An optional motion sensor provides step dimming, area sensitivity, standby time and on/off.

- 4000K, 5000K
- 59, 82, or 100 watts
- Up to 13,620 lumens
- Accessories: Microwave Sensor, Photocell, Emergency Driver, Beauty Plate, Surge Protector



Regular Canopy



Parking Canopy





# LINEAR FIXTURES

## COMMERCIAL STRIP



- 3CCT - 3500K, 4000K, 5000K
- 22 to 68W
- Up to 9,398 lumens
- Dimmable: 0-10V
- Accessories: Motion Sensor, Emergency Driver

Available in 2, 4 or 8 ft. options

## VAPORTIGHT



The new selectable color and selectable wattage Vapor Tight is just one of several linear lighting options from NaturaLED. Available in 2, 4 or 8 ft. options, this fixture produces up to 13,000 lumens.

Wall/ Ceiling mounting



- 3CCT - 3500K, 4000K, 5000K (except for 8 ft.)
- 20 to 100W
- Up to 13,000 lumens
- Dimmable: 0-10V
- Accessories: Wall Mount, Motion Sensor, Emergency Driver

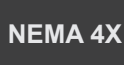
## COMMERCIAL WRAP



- 3CCT - 3500K, 4000K, 5000K
- 22/28/34/44W
- Up to 5,720 lumens
- Dimmable: 0-10V
- Accessories: Emergency Driver, Motion Sensor

## UTILITY WRAP

- 4000K or 5000K
- 27W
- Up to 3,510 lumens
- Dimmable: 0-10V
- Accessories: Emergency Driver, Motion Sensor



# REPLACEMENT LED TUBES



## INSTANT FIT TYPE A TUBES



NaturaLED® Instant-Fit Type AT5 and T8s make it easy to upgrade fluorescents to energy efficient LED lighting. Compatible with existing electronic fluorescent ballasts without re-wiring, the Instant-Fit tubes come in 2 ft., 3 ft., or 4 ft. lengths and improve energy savings up to 65%. These tubes generate a wide beam spread of 320° like the traditional pattern from existing fluorescent tubes.

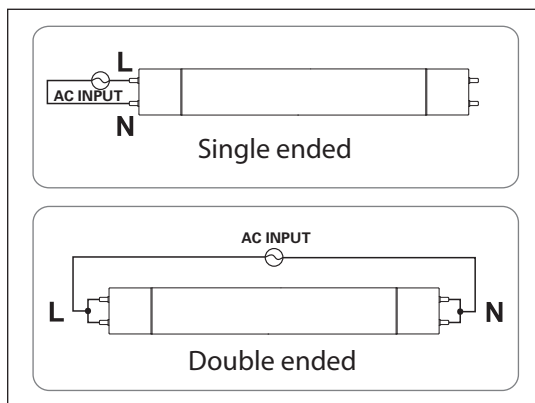
- Up to 2,200 lumens
- 10-16 watts, 4000K/5000K
- Instant fit (compatible with fluorescent ballast\*)
- Instant on, Flicker free
- Quick and easy LED upgrade
- Contains no mercury or lead
- Base: 2, 3, 4 ft - Mini/Medium Bi-Pin

\*Contact us for compatibility list.

## INTEGRATED TYPE B TUBES

NaturaLED® LED Integrated T5/T8 UL Type B Tubes work directly with 120-277 line voltage, so it is required to remove the existing fluorescent ballast. This DLC qualified tube is available in 9-40 watts that can replace 2 ft., 3 ft., 4 ft. or 8 ft. tubes. These tubes generate a wide beam spread of 320° like the traditional pattern from existing fluorescent tubes.

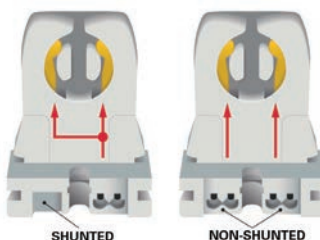
- Up to 5,500 lumens
- 9 - 40 watts, 4000K/5000K
- Line voltage 120-277V
- Instant on, noise-free



## T8 UNIVERSAL



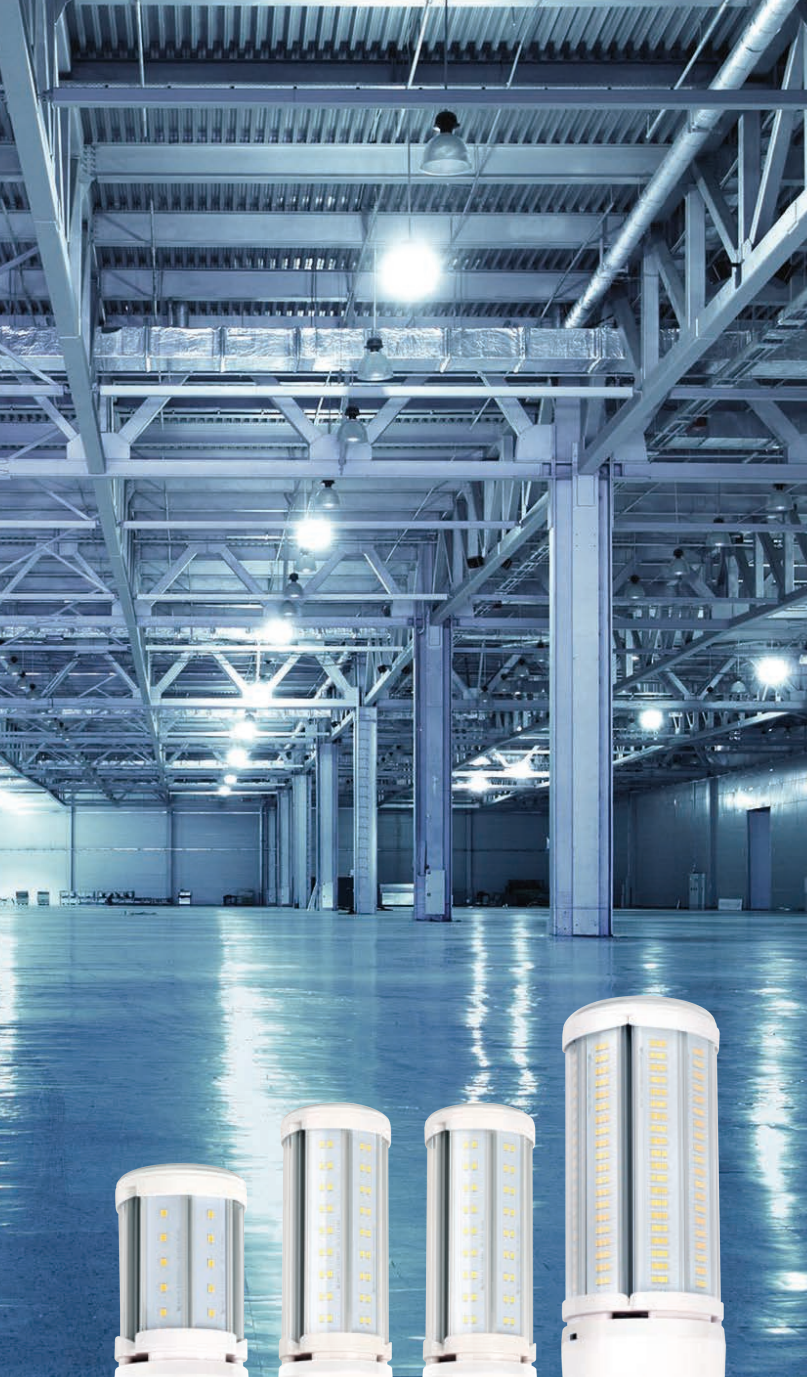
- Compatible with shunted and non-shunted sockets
- Eliminates installation labor costs for additional wiring



- Shunted sockets receive voltage through a single set of wires and spread it to two contacts.
- Non-shunted sockets send voltage to each of the contacts, through two wiring tracks.

Standard Type B Direct Wire tubes use single ended non-shunted socket, but NaturaLED Universal tubes are compatible with shunted and non-shunted, single and double ended as well.





## LED CORN COB LAMPS

NaturaLED Corn Cob Lamps have an integrated driver and dissipate heat with an extended aluminum heatsink without the use of a fan.

- 5000K
- 18, 27, 36, or 80 watts
- Up to 9,980 lumens
- Available in E26 or EX39 base

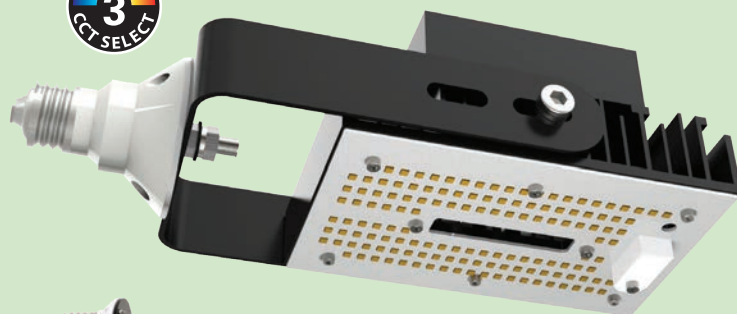


# HID

## REPLACEMENTS

LED HID replacements are affordable, practical lighting solutions that provide a quick and easy upgrade for open spaces like warehouses or retail applications.

## HID RETROFIT KIT



E26 mount adapter available

The LED Retrofit Kits have been designed specifically for existing HID fixtures. They deliver twice the lumen output and efficacy compared to retrofits using generic LED kits.

- 50/100W – 3CCT - 3000K, 4000K, 5000K
- 180/240W – 5000K
- Up to 38,400 lumens
- Accessories: E26 Mounting Adapter and Surge Protector



250-400W HID replaced with 50W LED retrofit kit.  
Energy savings up to 87%

Perfect replacement option for existing fixtures. Shoeboxes, High Bays, Low Bays, Floods, Wall Packs and more.



naturaLED®



### California, USA

2000 S. Grove Ave, Bldg B, Ontario, CA 91761  
855-758-7009 | 909-930-6868

### Texas, USA

1940 Diplomat Drive, Farmers Branch, TX 75234

### North Carolina, USA

2511 Reliance Ave, Apex, NC 27539

### Canada

Unit 206 – 9710 187th Street Surrey, BC V4N 3N6