



natura^{led}[®]
Warehouse Lighting

LINEAR

HIGH BAY

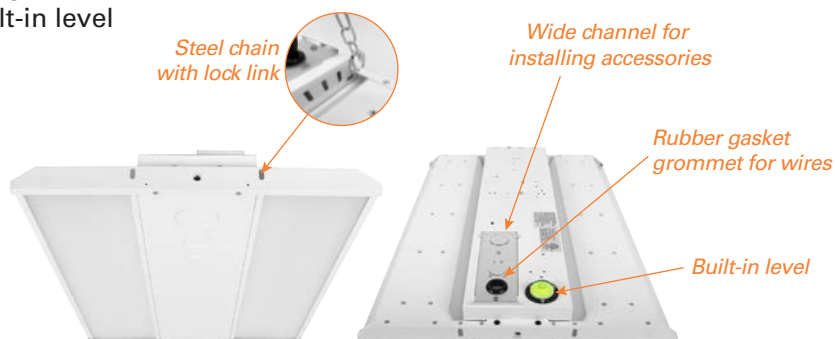
The NaturaLED Linear High Bay is an excellent option for generating bright, even illumination with up to 42,440 lumens. It is designed with common sense features to create a durable and robust fixture.

Manufactured with a 5" wide channel to allow room for accessories like motion sensors or emergency drivers, this DLC Premium fixture has a built-in level for ease of installation.

- 4000K, 5000K
- Up to 42,440 lumens
- 100, 150, 210 or 300 watts
- Voltage: 120-277V / 120-347V / 277-480V
- Accessories: Emergency Driver, Motion Sensor, Wireless Controller, Yoke Mount, Pendant Mount, Wireguard



Available in 2 ft, 4 ft



Occupancy & Daylighting, Wireless Programmers and Sensors



Wall Switch Linkable Sensor/
Remote Programmer



Motion & Photocell Sensor/
Remote Programmer



Cell phone control

Wall Switch control

Wall Switch/
Bluetooth Controller



NaturaLED® manufactures high performance LED lighting solutions that can reduce energy and lower maintenance costs. Warehouses require lighting to ensure that employees can stay safe and work more efficiently.





Available in 11", 13", 15" diameter



ROUND HIGH BAY



Optional black with 347V

The compact and lightweight Round High Bay is IP66 rated. Engineered with an adjustable pre-installed hook, it can replace traditional 1000-watt HID's. This versatile fixture comes with several optional accessories; a 120° lens, polycarbonate refractor, and a motion sensor that can be operated with a remote control.

- 5000K
- 100, 150, or 200 watts
- Up to 32,985 lumens
- Voltage: 120-277V, 120-347V
- Accessories: Refractor, Lens, Motion Sensor, Remote Control, Pendant Mount



Available optional Accessories:



Polycarbonate Refractor/ Lens



Sensor/ Remote Controller



Cell phone control

*Wall Switch/
Bluetooth Controller*

Wall Switch control

LINEAR FIXTURES

COMMERCIAL STRIP



- 3CCT - 3500K, 4000K, 5000K
- 22 to 68W
- Up to 9,398 lumens
- Dimmable: 0-10V
- Accessories: Motion Sensor, Emergency Driver

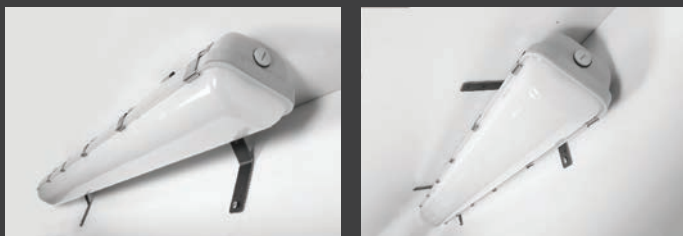
Available in 2, 4 or 8 ft. options

VAPORTIGHT



The new selectable color and selectable wattage Vapor Tight is just one of several linear lighting options from Naturalled. Available in 2, 4 or 8 ft. options, this fixture produces up to 13,000 lumens.

Wall/ Ceiling mounting



- 3CCT - 3500K, 4000K, 5000K (except for 8 ft.)
- 20 to 100W
- Up to 13,000 lumens
- Dimmable: 0-10V
- Accessories: Wall mount, Motion Sensor, Emergency Driver

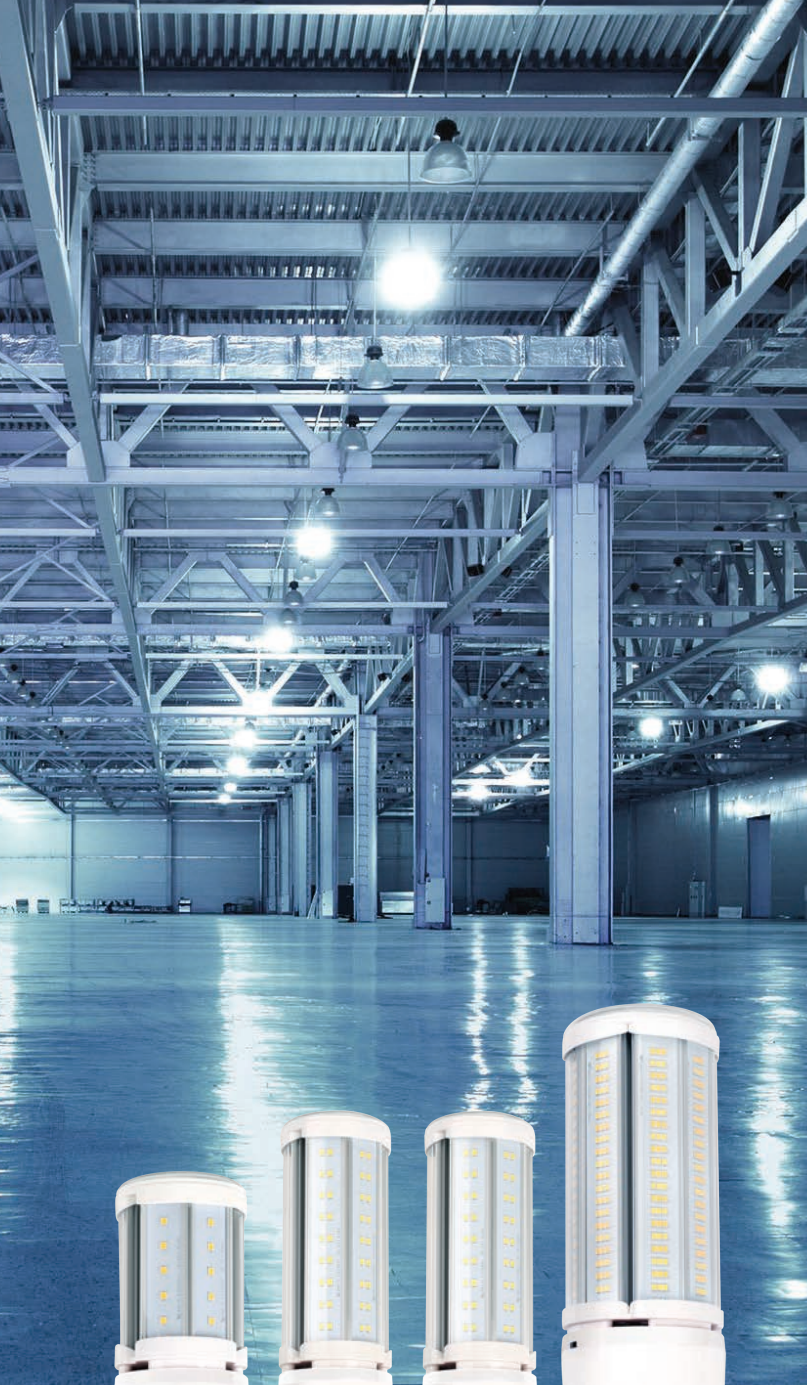
COMMERCIAL WRAP



- 3CCT - 3500K, 4000K, 5000K
- 22/28/34/44W
- Up to 5,720 lumens
- Dimmable: 0-10V
- Accessories: Emergency Driver, Motion Sensor

UTILITY WRAP

- 4000K or 5000K
- 27W
- Up to 3,510 lumens
- Dimmable: 0-10V
- Accessories: Emergency Driver, Motion Sensor



LED CORN COB LAMPS

NaturaLED Corn Cob Lamps have an integrated driver and dissipate heat with an extended aluminum heatsink without the use of a fan.

- 5000K
- 18, 27, 36, or 80 watts
- Up to 9,980 lumens
- Available in E26 or EX39 base

HID

REPLACEMENTS

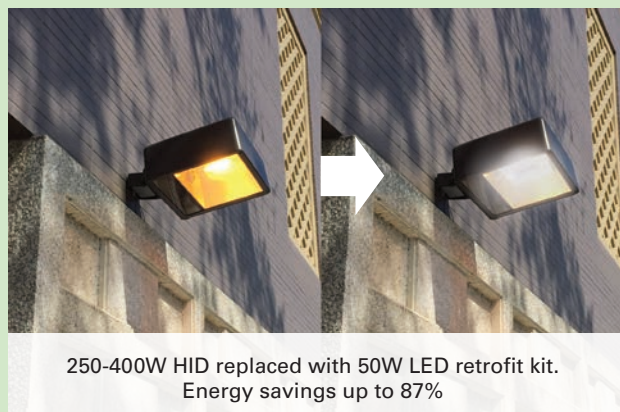
LED HID replacements are affordable, practical lighting solutions that provide a quick and easy upgrade for open spaces like warehouses or retail applications.

HID RETROFIT KIT



The LED Retrofit Kits have been designed specifically for existing HID fixtures. They deliver twice the lumen output and efficacy compared to retrofits using generic LED kits.

- 50/100W – 3CCT - 3000K, 4000K, 5000K
- 180/240W – 5000K
- Up to 38,400 lumens
- Accessories: E26 Mounting Adapter and surge protector



250-400W HID replaced with 50W LED retrofit kit.
Energy savings up to 87%

Perfect replacement option for existing fixtures. Shoeboxes, High Bays, Low Bays, Floods, Wall Packs and more.

REPLACEMENT LED TUBES



INSTANT FIT TYPE A TUBES



NaturaLED® Instant-Fit Type AT5 and T8s make it easy to upgrade fluorescents to energy efficient LED lighting. Compatible with existing electronic fluorescent ballasts without re-wiring, the Instant-Fit tubes come in 2 ft., 3 ft., or 4 ft. lengths and improve energy savings up to 65%. These tubes generate a wide beam spread of 320° like the traditional pattern from existing fluorescent tubes.

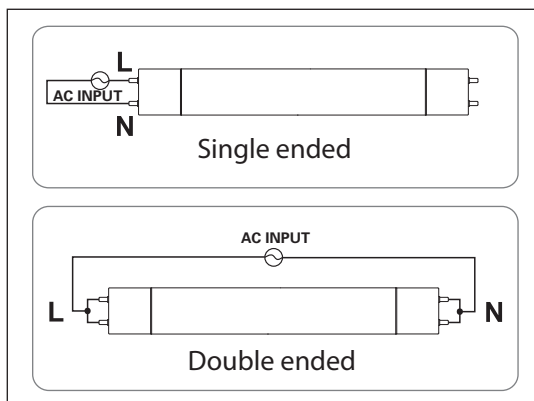
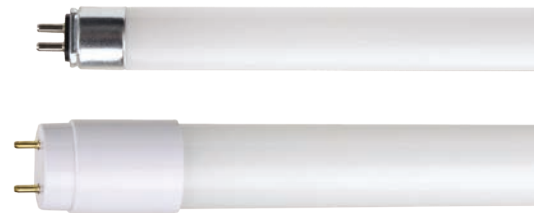
- Up to 2,200 lumens
- 10-16 watts, 4000K/5000K
- Instant fit (compatible with fluorescent ballast*)
- Instant on, Flicker free
- Quick and easy LED upgrade
- Contains no mercury or lead
- Base: 2, 3, 4 ft - Mini/Medium Bi-Pin

*Contact us for compatibility list.

INTEGRATED TYPE B TUBES

NaturaLED® LED Integrated T5/T8 UL Type B Tubes work directly with 120-277 line voltage, so it is required to remove the existing fluorescent ballast. This DLC qualified tube is available in 9-40 watts that can replace 2 ft., 3 ft., 4 ft. or 8 ft. tubes. These tubes generate a wide beam spread of 320° like the traditional pattern from existing fluorescent tubes.

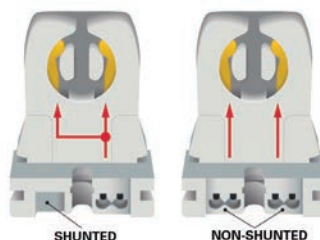
- Up to 5,500 lumens
- 9 - 40 watts, 4000K/5000K
- Line voltage 120-277V
- Instant on, noise-free



T8 UNIVERSAL



- Compatible with shunted and non-shunted sockets
- Eliminates installation labor costs for additional wiring



- Shunted sockets receive voltage through a single set of wires and spread it to two contacts.
- Non-shunted sockets send voltage to each of the contacts, through two wiring tracks.

Standard Type B Direct Wire tubes use single ended non-shunted socket, but NaturaLED Universal tubes are compatible with shunted and non-shunted, single and double ended as well.

ADDITIONAL PRODUCTS

OUTDOOR LED FIXTURES



Compact Area Lights



Post Tops



Wall Packs



Bollards



Flood Lights

INDOOR LED FIXTURES



Ultra Slim Disk Lights



Troffers



Retrofit Troffers



Recessed Downlights



Back-lit Flat Panels



Retrofit Strip Light

LED LAMPS



R/BR



PAR/MR



A19/A21



California, USA

2000 S. Grove Ave, Bldg B, Ontario, CA 91761
855-758-7009 | 909-930-6868

Texas, USA

1940 Diplomat Drive, Farmers Branch, TX 75234

North Carolina, USA

2511 Reliance Ave, Apex, NC 27539

Canada

Unit 206 – 9710 187th Street Surrey, BC V4N 3N6